

# LEAD

## Leading, Empowering & Disrupting

AUGUST NEWSLETTER

### LETTER FROM THE EDITORS

We can't believe the first LEAD class is about to graduate. We learned a lot as we put together this first class, and we are excited to watch the program continue to evolve. We received almost 50 applications for the 2019-2020 cohort. We will welcome another class starting in September at SCARD in Portland, OR. The current class will finish with a program at ACR RLI Summit. Their last experience will include a simulation based learning on how to lead through change. We have found that one of the most important skill set for our next generation of leaders is the ability to inspire and lead change. The simulation will give our LEAD women the chance to practice this important skill, and get feedback on their decisions.

Thanks for your on going support. We welcome your feedback and ideas for content for the LEAD program.

Thanks,

Cheri and Sara

**Dr. Cheri Canon**



**Sara Kwan**



### WHAT IS LEAD?

A group uniting and empowering women from both academia and industry to elevate their role in leadership and to advocate for current and future women leaders through education, mentorship, and dialogue.

### UPCOMING EVENTS

**August : Change Management Simulation Group Work**

**September 5<sup>th</sup>-8<sup>th</sup> : Graduation at ACR RLI Summit**

Hosted at Babson College in Boston, MA

**September 18<sup>th</sup>-20<sup>th</sup> : 2019-2020 New Class Kick Off at SCARD**

Hosted in Portland, OR

**December : RSNA Alum Event**

Date and location TBD

## STEERING COMMITTEE

**CHERI L. CANON, MD**

*Co-Director*

University of Alabama at  
Birmingham

Birmingham, AL

**SARA KWAN, MBA**

*Co-Director*

GE Healthcare

New York, NY

**JOCELYN D. CHERTOFF, MD,  
MS**

Dartmouth Hitchcock Medical  
Center

Lebanon, NH

**THOMAS M. GRIST, MD**

University of Wisconsin  
Medicine and Public Health  
Madison, WI

**CAROLYN C. MELTZER, MD**

Emory University

Atlanta, GA

**ALEXANDER NORBASH, MD**

University of California San  
Diego

San Diego, CA

**M. ELIZABETH OATES, MD**

University of Kentucky

Lexington, KY

**VIJAY M. RAO, MD**

Thomas Jefferson University  
Hospital

Philadelphia, PD

**NEIL M. ROFSKY, MD**

University of Texas  
Southwestern

Dallas, TX

**JUDY YEE, MD**

Montefiore Medical Center

Bronx, NY

**MARIA KELLY, MD, BCh**

AAWR

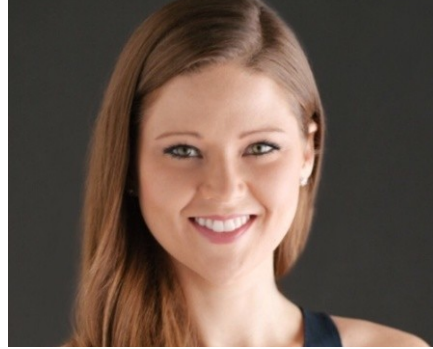
Reston, VA

**ETTA PISANO, MD**

AAWR

Reston, VA

## LEAD WOMEN OF THE MONTH



**Misty Brownd**

**CT Business Leader at GE  
Healthcare**

In Misty's words: Although I have always had a "tribe" within GE, my tribe previously did not share similar goals or struggles. The LEAD program has introduced me to women in radiology and throughout GE who will be my biggest supporters and accountability partners throughout my career. I've learned the art of sponsoring versus mentoring and how the difference is what will elevate my team. I've spent time working on my brand and ensuring it's aligned with exactly who I want to be every day. Most importantly, I've met incredible women who challenge me daily to rise to the occasion. I feel privileged to lead the alumni efforts over the next year to ensure these bonds remain just as strong as they are today. Misty has been recently promoted to be the Director of Alumni Engagement for the LEAD program moving forward. Congratulations, Misty!



**Christine Chung**

**Diagnostic Radiology specialist  
in San Diego, California**

She attended and graduated from University of Iowa, College of Medicine in 1993, having over 26 years of diverse experience, especially in Diagnostic Radiology. She was nominated as Secretary Elect of the International Skeletal Society (ISS), the preeminent society for musculoskeletal imaging, pathology, and surgery. This places her in the line of succession for the Presidency of the Society. In the 45 years of the existence of the ISS, there has only been a single female president.

Congratulations, Christine, on this accomplishment!