

SCARD

**Society of Chairmen of
Academic Radiology
Departments**

NEW AND PROSPECTIVE CHAIR ORIENTATION

**October 12 - 13, 2006
1:00 pm – 5:00 pm
Pinnacle C**

**Stoweflake Mountain Resort & Spa
Stowe, Vermont**

SCARD

NEW AND PROSPECTIVE CHAIR ORIENTATION

Hotel Map

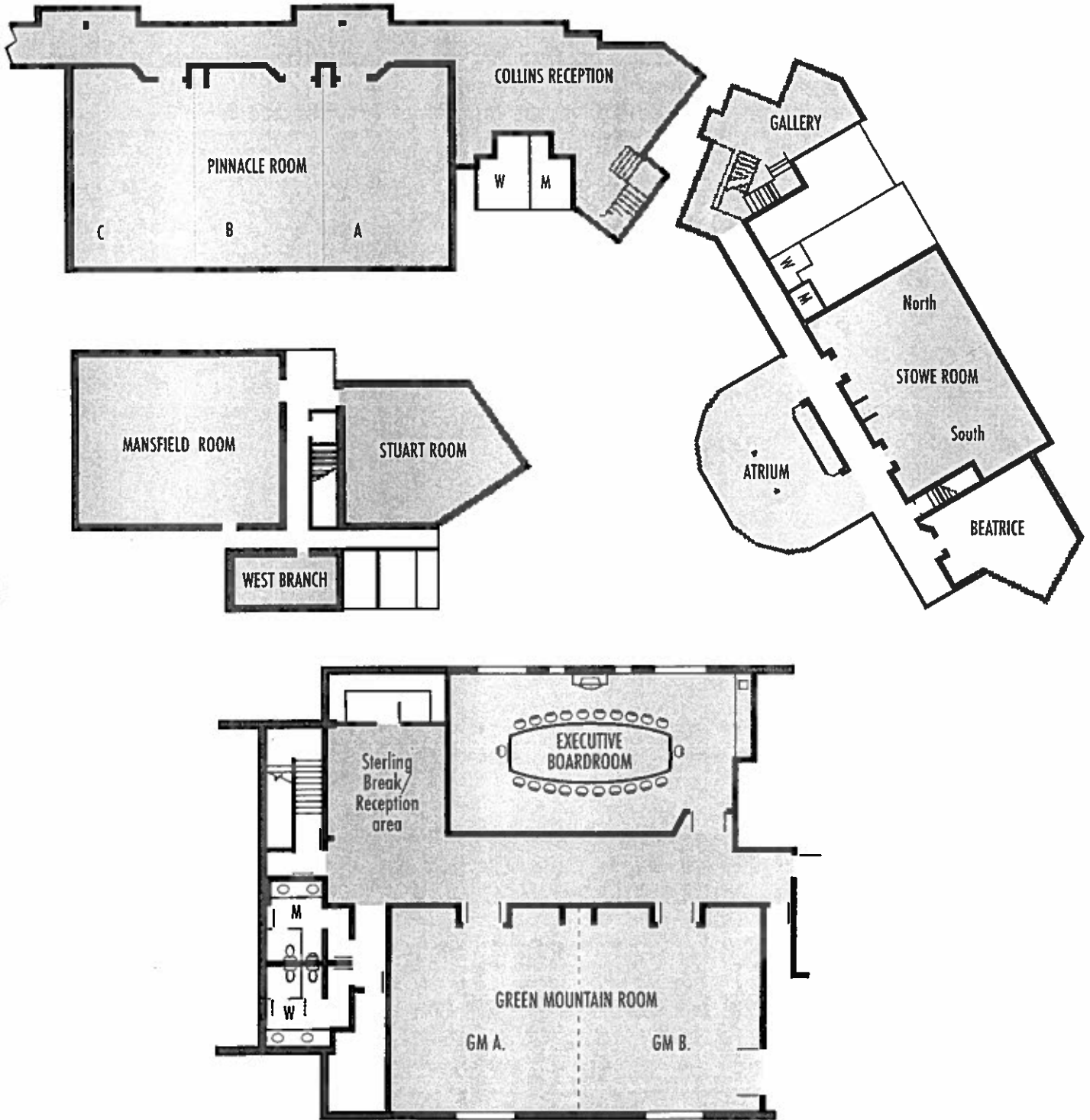
Final Program

Faculty List

Attendee List

Notes

Stoweflake Resort & Conference Center Meeting Space Layout



Society of Chairmen of Academic Radiology Departments

NEW AND PROSPECTIVE CHAIR ORIENTATION

Stoweflake Mountain Resort and Spa, Stowe, Vermont

October 12 – 13, 2006

In joint sponsorship with the Radiological Society of North America

Accreditation and Designation Statement

This activity has been planned and implemented in accordance with the Essential Areas and policies of the Accreditation Council for Continuing Medical Education (ACCME) through the joint sponsorship of the Radiological Society of North America (RSNA) and the Society of Chairmen of Academic Radiology Departments (SCARD). The RSNA is accredited by the ACCME to provide continuing medical education for physicians.

The RSNA designates this educational activity for a maximum of 7.0 *AMA PRA Category 1 CreditsTM*. Physicians should only claim credit commensurate with the extent of their participation in the activity.

Evaluation

In compliance with the ACCME requirements, you must record your attendance and evaluate the sessions you attend in order to receive AMA PRA Category 1 Credit.

The evaluation instrument is supplied to you at registration in a booklet format. The session evaluations appear in chronological order. Please write your name, address, and degree(s) in the space provided, and complete the evaluations for the sessions you attend. At the end of the meeting, submit this completed evaluation booklet to the SCARD registration desk. A record of the CME credit earned at this meeting will be mailed to you six to eight weeks after the meeting.

Content Codes

To better help the participants of this AMA PRA Category 1 Credit activity organize their CME records, two-letter content codes will be indicated in the evaluation booklet.

Target Audience

This two-day course is designed for newly appointed chairs (less than two years), for senior faculty who aspire to become chair of an academic radiology department, for junior faculty curious to know more about what a chair's responsibilities encompass, and for chief residents who aspire to leadership in their career.


Learning Objectives

At the completion of this meeting participants should be able to:

- Understand the strategic imperatives affecting the position of radiology chairs.
- Be aware of research initiatives and tactics at the local and national level.
- Become familiar with methodologies and principles affecting the capturing, retention, and expansion of clinical income.
- Learn about the impact of new regulations on the chair's freedom of action and attention to departmental protection
- Gain insight into the stratagems for program and faculty development.

Disclosure Statements

The Accreditation Council for Continuing Medical Education requires the RSNA, as an accredited provider of continuing medical education, to obtain signed disclosure statements from faculty (ie, Board members, committee members, program planners, presenters) for the SCARD Fall Meeting and New and Prospective Chair Orientation programs. It further requires that the RSNA provide disclosure information to all attendees prior to the educational activity. Faculty who have or have had within the previous 12 months (or at the time the research was conducted) an affiliation or financial relationship with any commercial interest are noted with a star (*) after their name in the program book. Financial disclosure statements for these individuals are reported after each individual's name in the disclosure index. All other faculty have indicated they have nothing to disclose.

 This icon indicates discussion of uses not approved by the FDA. The RSNA and SCARD recognize that at scientific meetings faculty may discuss the application of some devices, materials, or pharmaceuticals that are not FDA approved. In keeping with the highest standards of professional integrity and ethics, RSNA and SCARD require that faculty fully disclose to their audience that there will be discussion of the unlabeled use of a commercial product, device, or pharmaceutical that has not been approved for such purpose by the FDA.

Program Schedule

Thursday, October 12

Location: Pinnacle C

7:00 AM – 5:00 PM

Registration

Location: Collins

1:00 PM – 2:00 PM

Leadership

AMA PRA Category 1 Credit: 1.00

Stephen R. Baker, MD

Learning Objectives: Acquaint the prospective or new chair with strategic goals common to all leaders of academic radiology departments. Describe the dynamics of the devolution of responsibility among chairs of radiology, medical directors, and deans.

2:00 PM – 2:30 PM

Billing: Front End/Back End

AMA PRA Category 1 Credit: 0.50

Robert K. Zeman, MD

Learning Objectives: Learn the importance of Medicare compliance and how to implement a compliance plan. Understand CPT and ICD-9 coding processes. Appreciate the fundamental billing differences between hospital-based and freestanding imaging centers

2:30 PM – 3:00 PM

HIPAA

AMA PRA Category 1 Credit: 0.50

Robert K. Zeman, MD

Learning Objectives: Understand HIPAA compliance as it relates to privacy, electronic data, and security. Appreciate the unique treatment relationships of the radiologist. Be able to enact a Business Associate Agreement or Organized Health Care Arrangement when appropriate.

3:00 PM – 3:20 PM

Break

Thursday, October 12 *(continued)*

Location: Pinnacle C

3:20 PM – 4:10 PM

Billing: Contracting

AMA PRA Category 1 Credit: 0.75

Ronald L. Arenson, MD

Learning Objectives: Learn about billing organizations and medical group structures. Study relationships with medical centers, including joint ventures. Consider patient mix implications for billing and contracting.

4:10 PM – 5:00 PM

Challenges to a Leader: Eight Case Studies

AMA PRA Category 1 Credit: 0.75

Stephen R. Baker, MD

Learning Objectives: To offer a mechanism for interactive discussions on a case-based format of issues pertinent to leadership by a radiology chairman. To raise issues through such discussions about human resources and equipment resources pertinent to a chairman. To reinforce through didactic exchange salient features important for leaders to acknowledge, if not accept, with respect to motivating and managing faculty.

Friday, October 13

Location: Pinnacle C

7:00 AM – 5:00 PM

Registration

Location: Collins

1:00 PM – 1:45 PM

Faculty Discipline

AMA PRA Category 1 Credit: 0.75

Stephen R. Baker, MD

Learning Objectives: Describe the limitations of the chair's range of action with respect to non-renewal and firing of employees. Present the various state and federal regulations with respect to employee rights. Offer a tactical guide for the removal of inept or recalcitrant faculty.

1:45 PM – 2:15 PM

Compensation Plan

AMA PRA Category 1 Credit: 0.50

Ronald L. Arenson, MD

Learning Objectives: Determine what constitutes a good compensation plan. Learn what types of incentives are important and meaningful. Balance recruitment needs and retention needs, determine fairness. Determine if on-call work should receive additional remuneration.

2:15 PM – 3:00 PM

How Do We Motivate Junior Faculty?

AMA PRA Category 1 Credit: 0.75

Steven E. Seltzer, MD ★

Learning Objectives: By attending this session, registrants will learn: Basic principles of motivation for professionals. Options for developing specific motivational programs for junior faculty. Ways to evaluate the effectiveness of such programs.

3:00 PM – 3:15 PM

Break

3:15 PM – 4:00 PM

How Do We Motivate Senior Faculty?

AMA PRA Category 1 Credit: 0.75

James H. Thrall, MD ★

Learning Objectives: Review a summary of special issues facing senior faculty. Learn the do's and don'ts of managing senior faculty. Learn about factors that inhibit effective management. Compare different management philosophies.

4:00 PM – 4:45 PM

Questions and Answers

AMA PRA Category 1 Credit: 0.75

Ronald L. Arenson, MD

Stephen R. Baker, MD

*Steven E. Seltzer, MD **

*James H. Thrall, MD **

Robert K. Zeman, MD

Program Adjourns

Faculty List

Ronald L. Arenson, MD
University of California San
Francisco
San Francisco, CA

Stephen R. Baker, MD
UMDNJ-New Jersey Medical
School
Newark, NJ

Steven E. Seltzer, MD
Brigham & Women's Hospital
Boston, MA

James H. Thrall, MD
Massachusetts General Hospital
Boston, MA

Robert K. Zeman, MD
George Washington University
Medical Center
Washington, DC

Disclosure Index

Seltzer, Steven E.

Radiology Advisory Board, General Electric Company; President,
Brigham Radiology Research and Education Foundation, an equity
holder in Medicalis Corporation

Thrall, James H.

Academic Advisory Board, General Electric Company; Board of
Directors, E-Z-EM, Inc, Lake Success, NY; Board of Directors,
Mobile Aspects, Inc, Pittsburgh, PA

**SCARD 2006 New and Prospective Chair Orientation
Pre-Registration Attendee List**

Ronald L. Arenson, MD
Dept of Radiology (M-391)
University of California San Francisco
505 Parnassus Ave
San Francisco CA 94143-0628
Phone: 415-476-1537
Fax: 415-476-0616
Email: ron.arenson@radiology.ucsf.edu

Jonathan Broder, MD
Dept of Radiology
Rochester General Hospital
1425 Portland Ave
Rochester NY 14621
Phone: 585-922-3245
Fax:
Email: jonathan.broder@viahealth.org

Stephen Robert Baker, MD
Dept of Radiology (C-320)
UMDNJ-New Jersey Medical School
150 Bergen St
Newark NJ 07103
Phone: 973-972-5188
Fax: 973-972-7429
Email: bakersr@umdnj.edu

James L. Buck, MD
Dept of Diagnostic Radiology (HX-311A)
Chandler Medical Center
800 Rose St
Lexington KY 40536
Phone: 859-323-2954
Fax: 859-257-6014
Email: jlbuck0@uky.edu

Basil Hubbi, MD
Dept of Radiology (C-318)
UMDNJ University Hospital
150 Bergen St
Newark NJ 07103
Phone: 973-972-5188
Fax: 973-972-7429
Email: bhubbi@gmail.com

Mary J. Connell, MD
Dept of Radiology
Maricopa Medical Center
2601 E Roosevelt
Phoenix AZ 85008
Phone: 602-344-1513
Fax: 602-344-1004
Email: mconnell@pol.net

Johan G. Blickman, MD, PhD
Afdelingshoofd Radiologie
Radboud UMC
Box 9101, Rte 667
6500 HB Nijmegen
NETHERLANDS
Phone: 31-243616473
Fax: 31-243540866
Email: j.blickman@rad.umcn.nl

Susan M. Edwards, MD
Dept of Radiological Sciences
Oklahoma Univ HSC
1200 N Everett, INP 1606
Oklahoma City OK 73104
Phone: 405-271-5132
Fax: 405-271-3462
Email: susan-edwards@ouhsc.edu

**SCARD 2006 New and Prospective Chair Orientation
Pre-Registration Attendee List**

Jeremy J. Kaye, MD
Dept of Radiology (MCN CCC-1121)
Vanderbilt Medical Center
1161 21st Ave S
Nashville TN 37232
Phone: 615-343-1187
Fax: 615-322-3879
Email: jeremy.kaye@vanderbilt.edu

James Hunter Thrall, MD
Dept of Radiology (MZ-FND216)
Massachusetts General Hospital
55 Fruit St
Boston MA 02114
Phone: 617-726-5244
Fax: 617-726-3077
Email: thrall.james@mgh.harvard.edu

Terence Albert S. Matalon, MD
Dept of Radiology
Albert Einstein Medical Center
5501 Old York Rd
Philadelphia PA 19141
Phone: 215-456-6225
Fax: 215-456-6227
Email: matalont@einstein.edu

Peter Yoo, MD
Dept of Radiology (C-318)
UMDNJ University Hospital
150 Bergen St
Newark NJ 07103
Phone: 973-972-5188
Fax: 973-972-7429
Email: pyoo100@yahoo.com

Carolyn Meltzer, MD
Dept of Radiology
Emory University
1364 Clifton Rd NE
Atlanta GA 30322
Phone: 404-712-4966
Fax: 404-712-2915
Email: cmeltze@emory.edu

Robert K. Zeman, MD
Dept of Radiology
George Washington Univ Medical Center
900 23rd St NW
Washington DC 20037
Phone: 202-715-5156
Fax: 202-715-5210
Email: zemanr@starpower.net

Steven Erwin Seltzer, MD
Dept of Radiology
Brigham & Women's Hospital
75 Francis St
Boston MA 02115-6110
Phone: 617-732-6273
Fax: 617-278-6940
Email: sseltzer@partners.org
