

LEAD Class 2018-2019



LEAD Participants – SCARD



Susan Ackerman, MD

Associate Professor of Radiology, Vice Chair for Clinical Affairs in Radiology, Division Director of Ultrasound
Medical University of South Carolina



Senta Berggruen, MD

Vice Chair for Education and Diversity, Department of Radiology, Associate Professor of Radiology
Northwestern University



Miriam Bredella, MD

Professor of Radiology at Harvard Medical School, Radiologist and Vice Chair for Faculty Affairs & Director of the Center for Faculty Development, Massachusetts General Hospital



Christina Chung, MD

Associate Professor
UC San Diego Health



Carolynn DeBendectis, MD

Vice Chair for Education, Director, Radiology Residency Program and Associate Professor of Radiology
University of Massachusetts Medical Center



Shlomit Goldberg-Stein, MD

Radiology Director of Musculoskeletal, Medical Director of Advanced Imaging
Albert Einstein School of Medicine, Montefiore Medical Center



Heike Daldrup-Link, MD

Professor of Radiology
Stanford



Suzanne E. Lapi, MD

Vice Chair of Translational Research; Director, Cyclotron Facility; Director, Radiochemistry Laboratory; Division Director Advanced Medical Imaging Research
University of Alabama, Birmingham



Jessica Robins, MD

Associate Professor, Vice Chair of Faculty Development and Enrichment, Assistant Residency Program Director
University of Wisconsin



Shadi A. Shakeri, MD

Director of Technology Assessment, Associate Professor of Radiology
Massachusetts General Hospital

LEAD Participants – *GE Healthcare*



Brandy Kretz
Account Executive
GE Healthcare



Christina Rombola
Director, Medical and Scientific Affairs
GE Healthcare



Dharmini Smith
Service Sales Market Leader
GE Healthcare



Gina Maguire
Ultrasound Market Leader
GE Healthcare



Kat Davis Dotzauer
Market Vice President
GE Healthcare



Michelle Clipp
Product Sales Specialist - Patient Monitoring
GE Healthcare



Sara Casey
Account Executive
GE Healthcare

LEAD Class 2019-2020



LEAD Participants – SCARD



Tara M. Catanzano, MD

Vice Chair for Academic Affairs and Residency
Program Director, Department of Radiology,
Baystate Medical Center



Joanna R. Fair, MD, PhD

Associate Dean of Graduate Medical
Education, Radiology Vice Chair of Education
University of New Mexico



Jennifer A. Harvey, MD

Radiology Chair
University of Rochester Medical Center
Imaging Sciences



Marion A. Hughes, MD

Program Director of Diagnostic
Radiology Residency
University of Pittsburgh



Marta E. Heilbrun, MD, MPH

Vice Chair of Quality, Associate Professor,
Department of Radiology and Imaging
Sciences, Emory University Hospital



Regina J. Hooley, MD

Vice Chair of Clinical Affairs, Department of
Radiology and Biomedical Imaging
Yale School of Medicine



Bettina Siewert, MD

Executive Vice Chair, Vice Chair of
Quality and Safety
Beth Israel Deaconess Medical Center



Tracy Jaffe, MD

Division Chief Abdominal Imaging,
Vice Chair of Quality and Safety
Duke Health



Lucy Spalluto, MD, MPH

Associate Director of Diversity and Inclusion
Vanderbilt University



Pari V. Pandharipande, MD, MPH

Director of Technology Assessment,
Associate Professor of Radiology
Massachusetts General Hospital

LEAD Participants – *GE Healthcare*



Heidi Seerden
Director, Strategic Relationship
Channel
GE Healthcare



Rachel Ortega
Imaging Region Manager
GE Healthcare



Stephanie Marshall
Account Executive
GE Healthcare



Afiya Perkins
Account Executive
GE Healthcare



Jenna Thibault
Account Executive
GE Healthcare



Shari Manuel
Imaging Region Manager
GE Healthcare



Jodi Farrell
Account Executive
GE Healthcare



Miyoko Williams
Account Development Leader
GE Healthcare



Kyla Kruger
Applications Leader – DI & LCS
GE Healthcare

LEAD Class 2021-2022



2021/ 2022 LEAD Program Participants – *Physician Team*



Lori Deitte, MD
Professor, Body Imaging; VC Education; VP for Continuous Professional Development
Vanderbilt University Medical Center



Angelica Robinson, MD
Associate Professor & Director, Breast Imaging; VC of Clinical Operations, Director, Breast Fellowship
UTMB



Catherine T. Vu, MD
Associate Professor, IR; Division Chief VIR; Associate Chair of Quality & Safety; PD for IR/DR
UC Davis



Fiona Fennessy, MD, PhD
Associate Professor, Abd Imaging; Cancer Imaging Fellowship Director
Brigham and Women's Hospital/Harvard Medical School



Shuchi Rodgers, MD
Associate Professor, Body Imaging; Associate Chair of Body Imaging; Chief of Radiology
Thomas Jefferson University



Jane Wang, MD
Professor, Abd Imaging; Associate Chair, Strategic Planning
UCSF



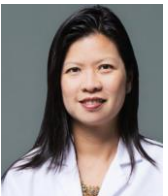
Amita Kamath, MD
Associate Professor, MIT; Program Director DR
Mount Sinai Hospital



Karla Sepulveda, MD
Associate Professor, Breast Imaging; Director and Section Chief of Breast Imaging
Baylor



Rita Zuley, MD
Professor, Breast Imaging; VC of Quality; Division Chief, Breast Imaging
University of Pittsburgh



Linda Moy, MD
Professor, Breast Imaging; Director, Breast MR Service
NYU



Jonelle Thomas, MD, MPH
Professor, MSK; VC of Clinical Affairs; Director of Medical Image Management
Penn State

2021/ 2022 LEAD Program Participants – *GE Healthcare*



Jody Nour
Senior Service Program Manager
GE Healthcare



Brittany Pullen
Region Modality Leader –
MR
GE Healthcare



Tamara Herring
Market General Manager –
Imaging – Houston
GE Healthcare



Garima Mathur
AI Product Orchestrator
GE Healthcare



Jennifer Hay-Roe
Service Finance Manager
GE Healthcare



Sue Edwards
Product Sales Specialist --
Maternal Infant Care
GE Healthcare



Sara Katherine Kirkpatrick
Senior Marketing Manager
GE Healthcare



Nahdia Pirzada
Applications Senior Director
GE Healthcare



Aimee Bacarella
Market General Manager –
Ultrasound - Dallas
GE Healthcare



Ashley Sharp
Region Modality Leader --
Breast Imaging
GE Healthcare



Laura Scherer
Product Surveillance Director
MCT
GE Healthcare



Natalie Gauthier
Product Sales Specialist –
General Imaging Ultrasound
GE Healthcare

LEAD Class 2022-2023



2022/ 2023 LEAD Program Participants – *Physician Team*



Hina Arif-Tiwari, MD
Vice Chair, Clinical Affairs; Chief, Abdominal Imaging; Director, Abdominal Imaging Fellowship Program
University of Arizona



Katherine (Kate) Kaproth-Joslin, MD, PhD
Division Head, Cardiothoracic Imaging; Associate Professor
University of Rochester



Mariam Moshiri, MD
Vice Chair, Faculty Recruitment and Development; Professor; Editor, RSNA Case Collection
Vanderbilt University



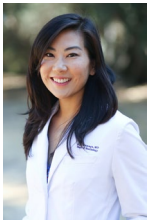
Olga R. Brook, MD
Associate Professor, Harvard Medical School; Section Chief of Abdominal Radiology
Beth Israel Deaconess Medical Center



Madelene Lewis, MD
Vice Chair Clinical Operations; Professor, Diagnostic Radiology Women's Imaging
Medical University of South Carolina



Kerry L. Thomas, MD
Division Chief, Abdominal Imaging; Associate Program Director, DR; Associate Professor
University of North Carolina – Chapel Hill



Aya Kamaya, MD
Professor of Radiology; Interim Chief, Body Imaging Division; Director, Ultrasound
Stanford University School of Medicine



Ana P. Lourenco MD
Program Director, Diagnostic Radiology Residency; Professor, Diagnostic Imaging
Alpert Medical School of Brown University



Carina Yang, MD
Vice Chair, Diversity & Inclusion; Associate Professor
University of Chicago Medicine

2022 / 2023 LEAD Program Participants – *GE Healthcare*



Kelsey Porcek
Executive, Strategic Clients
(New York)
GE Healthcare



Nancy Wright
Service Account Manager
(Canada)
GE Healthcare



JJ Gower
Sr. Product Manager, Digital Solutions
(US & Canada)
GE Healthcare



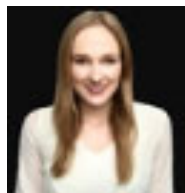
Diane Lacenere
Modality Leader, Mammography
(Florida)
GE Healthcare



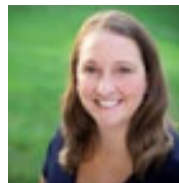
Lisa Tremont
Service, Business Operations Mgr.
(Central US)
GE Healthcare



Marianne Peterson
GM, Patient Monitoring Infrastructure
(US)
GE Healthcare



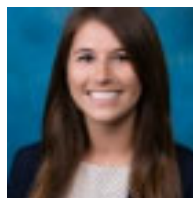
Annie Linder
Imaging General Manager
(Northstar)
GE Healthcare



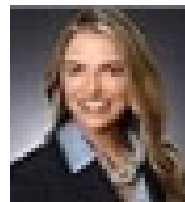
Aimee Cox
Regional Applications Director, Imaging
(N. Central)
GE Healthcare



Jennifer Berhalter
National Modality Leader, Nuclear Medicine
(US)
GE Healthcare



Kasie Lasserre
Account Manager, Imaging
(Boston Academics)
GE Healthcare



Jennifer Miller
Executive, Strategic Clients
(Florida)
GE Healthcare



Juliana Oliveira
Customer Success Manager
(West)
GE Healthcare

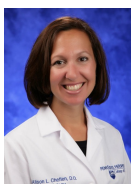


Michelle Cooley
Clinical Region Product Manager, GI Ultrasound
(US)
GE Healthcare

LEAD Class 2023-2024



2023-2024 LEAD Program Participants – *Physician Team*



Alison Chetlen, DO, FSBI
*Vice Chair, Education; Professor,
Department of Radiology, Division of
Breast Imaging
Penn State Health*



Diana Gomez-Hassan, MD, PhD
*Vice Chair, Radiology Operations
and Strategy; Clinical Professor,
Neuroradiology
University of Michigan*



Holly Marshall, MD
*Division Chief, Breast Imaging;
Associate Professor, Radiology
University Hospitals
Cleveland Medical Center*



Erin Cooke, MD
*Associate Professor, Radiology
Vanderbilt University Medical
Center*



Carolina Guimaraes, MD
*Division Chief, Pediatric
Radiology; Professor, Radiology
University of North Carolina at
Chapel Hill*



Sarah Milla, MD, FAAP
*Chair of Radiology, Children's
Hospital Colorado; Vice Chair
of Radiology
University of Colorado*



Orit Glenn, MD
*Professor, Clinical Radiology;
Director,
Pediatric Neuroradiology
University of California, San
Francisco*



Jeanne Horowitz, MD
*Vice Chair, Academic and Faculty Affairs;
Associate Professor, Abdominal
Imaging Northwestern University*



Vittoria Spampinato, MD
*Associate Professor, Radiology
Medical University of South
Carolina*



Noushin Yahyavi, MD, MBA
*Vice Chair, Business Affairs;
Associate Professor, Radiology
and Nuclear Medicine
University of Maryland*

2023 - 2024 LEAD Program Participants – GE HealthCare



Liz Birkmeyer
Imaging, General Manager
GE Healthcare
(St. Petersburg, FL)



Brigid Buckingham
Director, Government Affairs & Policy
GE Healthcare (Ontario)



Kyoko Fujimoto, PhD
Director, Research and Scientific Affairs
GE Healthcare
(Washington DC)



Maren Gilbert
Region Product Manager, Diagnostic Cardiology & Vital Signs
GE Healthcare (Chagrin Falls, OH)



Christina Gilbertson
CT Product Manager
GE Healthcare (Wauwatosa, WI)



Amy Johnson
Executive, Strategic Clients
GE Healthcare (Scottsdale, AZ)



Tammy Lee
Director, Technology Solutions - Customer Experience & Business Operations
GE Healthcare (Milwaukee, WI)



Taylor Marques
Product Sales Specialist, Cardiovascular Ultrasound
GE Healthcare (Austin, TX)



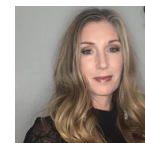
Jillian Sanders
Strategic Solutions Executive
GE Healthcare (Houston, TX)



Kristin Stahlman
Handheld Segment Sales Leader
GE Healthcare (Plainfield, IL)



Shirley Taylor
Region Modality Leader, Breast Imaging
GE Healthcare (Valley Stream, NY)



Colleen Timpanaro
General Imaging, Strategic Accounts - Key Opinion Leader
GE Healthcare (Houston, TX)



Catherine Zatek
Executive, Strategic Clients
GE Healthcare (Haddonfield, NJ)