

LEAD Class 2018-2019



Confidential. Not to be copied, distributed, or reproduced without prior approval.

November 17, 2020 1

LEAD Participants – SCARD



Susan Ackerman, MD

Associate Professor of Radiology, Vice Chair for Clinical Affairs in Radiology, Division Director of Ultrasound
Medical University of South Carolina



Senta Berggruen, MD

Vice Chair for Education and Diversity, Department of Radiology, Associate Professor of Radiology
Northwestern University



Miriam Bredella, MD

Professor of Radiology at Harvard Medical School, Radiologist and Vice Chair for Faculty Affairs & Director of the Center for Faculty Development, Massachusetts General Hospital



Christina Chung, MD

Associate Professor
UC San Diego Health



Carolynn DeBenedictis, MD

Vice Chair for Education, Director, Radiology Residency Program and Associate Professor of Radiology
University of Massachusetts Medical Center



Shlomit Goldberg-Stein, MD

Radiology Director of Musculoskeletal, Medical Director of Advanced Imaging
Albert Einstein School of Medicine, Montefiore Medical Center



Heike Daldrup-Link, MD

Professor of Radiology
Stanford



Suzanne E. Lapi, MD

Vice Chair of Translational Research; Director, Cyclotron Facility; Director, Radiochemistry Laboratory; Division Director Advanced Medical Imaging Research
University of Alabama, Birmingham



Jessica Robins, MD

Associate Professor, Vice Chair of Faculty Development and Enrichment, Assistant Residency Program Director
University of Wisconsin



Shadi A. Shakeri, MD

Director of Technology Assessment, Associate Professor of Radiology
Massachusetts General Hospital

LEAD Participants – *GE Healthcare*



Brandy Kretz
Account Executive
GE Healthcare



Christina Rombola
Director, Medical and Scientific Affairs
GE Healthcare



Dharmini Smith
Service Sales Market Leader
GE Healthcare



Gina Maguire
Ultrasound Market Leader
GE Healthcare



Kat Davis Dotzauer
Market Vice President
GE Healthcare



Michelle Clipp
Product Sales Specialist - Patient Monitoring
GE Healthcare



Sara Casey
Account Executive
GE Healthcare

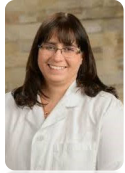
LEAD Class 2019-2020



Confidential. Not to be copied, distributed, or reproduced without prior approval.

November 17 2020 1

LEAD Participants – SCARD



Tara M. Catanzano, MD
Vice Chair for Academic Affairs and Residency
Program Director, Department of Radiology,
Baystate Medical Center



Joanna R. Fair, MD, PhD
Associate Dean of Graduate Medical
Education, Radiology Vice Chair of Education
University of New Mexico



Jennifer A. Harvey, MD
Radiology Chair
University of Rochester Medical Center
Imaging Sciences



Marion A. Hughes, MD
Program Director of Diagnostic
Radiology Residency
University of Pittsburgh



Marta E. Heilbrun, MD, MPH
Vice Chair of Quality, Associate Professor,
Department of Radiology and Imaging
Sciences, Emory University Hospital



Regina J. Hooley, MD
Vice Chair of Clinical Affairs, Department of
Radiology and Biomedical Imaging
Yale School of Medicine



Bettina Siewert, MD
Executive Vice Chair, Vice Chair of
Quality and Safety
Beth Israel Deaconess Medical Center



Tracy Jaffe, MD
Division Chief Abdominal Imaging,
Vice Chair of Quality and Safety
Duke Health



Lucy Spalluto, MD, MPH
Associate Director of Diversity and Inclusion
Vanderbilt University



Pari V. Pandharipande, MD, MPH
Director of Technology Assessment,
Associate Professor of Radiology
Massachusetts General Hospital

LEAD Participants – *GE Healthcare*



Heidi Seerden
Director, Strategic Relationship
Channel
GE Healthcare



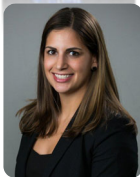
Rachel Ortega
Imaging Region Manager
GE Healthcare



Stephanie Marshall
Account Executive
GE Healthcare



Afiya Perkins
Account Executive
GE Healthcare



Jenna Thibault
Account Executive
GE Healthcare



Shari Manuel
Imaging Region Manager
GE Healthcare



Jodi Farrell
Account Executive
GE Healthcare



Miyoko Williams
Account Development Leader
GE Healthcare



Kyla Kruger
Applications Leader – DI & LCS
GE Healthcare

SCARD | GE HEALTHCARE



Leading, Empowering & Disrupting

LEAD Program

Leading Empowering And Disrupting

Updated: September 15, 2021

2021/ 2022 LEAD Program Participants – *Physician Team*



Lori Deitte, MD
Professor, Body Imaging; VC Education; VP for Continuous Professional Development
Vanderbilt University Medical Center



Angelica Robinson, MD
Associate Professor & Director, Breast Imaging; VC of Clinical Operations, Director, Breast Fellowship
UTMB



Catherine T. Vu, MD
Associate Professor, IR; Division Chief VIR; Associate Chair of Quality & Safety; PD for IR/DR
UC Davis



Fiona Fennessy, MD, PhD
Associate Professor, Abd Imaging; Cancer Imaging Fellowship Director
Brigham and Women's Hospital/Harvard Medical School



Shuchi Rodgers, MD
Associate Professor, Body Imaging; Associate Chair of Body Imaging; Chief of Radiology
Thomas Jefferson University



Jane Wang, MD
Professor, Abd Imaging; Associate Chair, Strategic Planning
UCSF



Amita Kamath, MD
Associate Professor, MIT; Program Director DR
Mount Sinai Hospital



Karla Sepulveda, MD
Associate Professor, Breast Imaging; Director and Section Chief of Breast Imaging
Baylor



Rita Zuley, MD
Professor, Breast Imaging; VC of Quality; Division Chief, Breast Imaging
University of Pittsburgh



Linda Moy, MD
Professor, Breast Imaging; Director, Breast MR Service
NYU



Jonelle Thomas, MD, MPH
Professor, MSK; VC of Clinical Affairs; Director of Medical Image Management
Penn State

2021/ 2022 LEAD Program Participants – *GE Healthcare*



Jody Nour
Senior Service Program Manager
GE Healthcare



Brittany Pullen
Region Modality Leader –
MR
GE Healthcare



Tamara Herring
Market General Manager –
Imaging – Houston
GE Healthcare



Garima Mathur
AI Product Orchestrator
GE Healthcare



Jennifer Hay-Roe
Service Finance Manager
GE Healthcare



Sue Edwards
Product Sales Specialist --
Maternal Infant Care
GE Healthcare



Sara Katherine Kirkpatrick
Senior Marketing Manager
GE Healthcare



Nahdia Pirzada
Applications Senior Director
GE Healthcare



Aimee Bacarella
Market General Manager –
Ultrasound - Dallas
GE Healthcare



Ashley Sharp
Region Modality Leader --
Breast Imaging
GE Healthcare



Laura Scherer
Product Surveillance Director
MCT
GE Healthcare



Natalie Gauthier
Product Sales Specialist –
General Imaging Ultrasound
GE Healthcare